

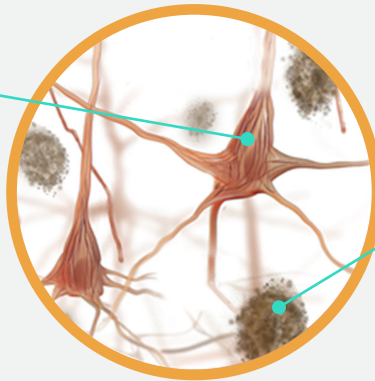
DETECTING ALZHEIMER'S IN BLOOD

New research at AAIC 2020 points to a blood marker that reflects both plaques and tangles – and may be useful to confirm Alzheimer's as the cause of dementia symptoms.

TAU: ANOTHER BLOOD BIOMARKER EMERGES

TANGLES

Research is looking at twisted proteins called tau tangles that build up inside cells and **may correlate more closely with cognitive decline than beta amyloid.**



PLAQUES

These amyloid protein deposits build up between brain cells in Alzheimer's disease.

New studies reported at AAIC show that a form of tau called p-tau217 seems to be very specific to Alzheimer's disease and, when measured in the blood, may detect brain changes before Alzheimer's symptoms occur.



While still in research stages, **blood tests are easier to administer and more accessible** than current methods of evaluating Alzheimer's.

NEW STUDIES AT AAIC 2020 SUGGEST THAT TAU IN THE BLOOD MAY:



Differentiate Alzheimer's from other dementias



Diagnose stage of disease



Identify appropriate people for clinical trials



Show changes 20 years before dementia symptoms arise