

# ADNI Clinical Core

**Paul Aisen**

**Ron Petersen**

**Michael Donohue**

**Tamie Sather**

**AAIC Boston**

**July 12, 2013**

# ADNI 2 Enrollment Update

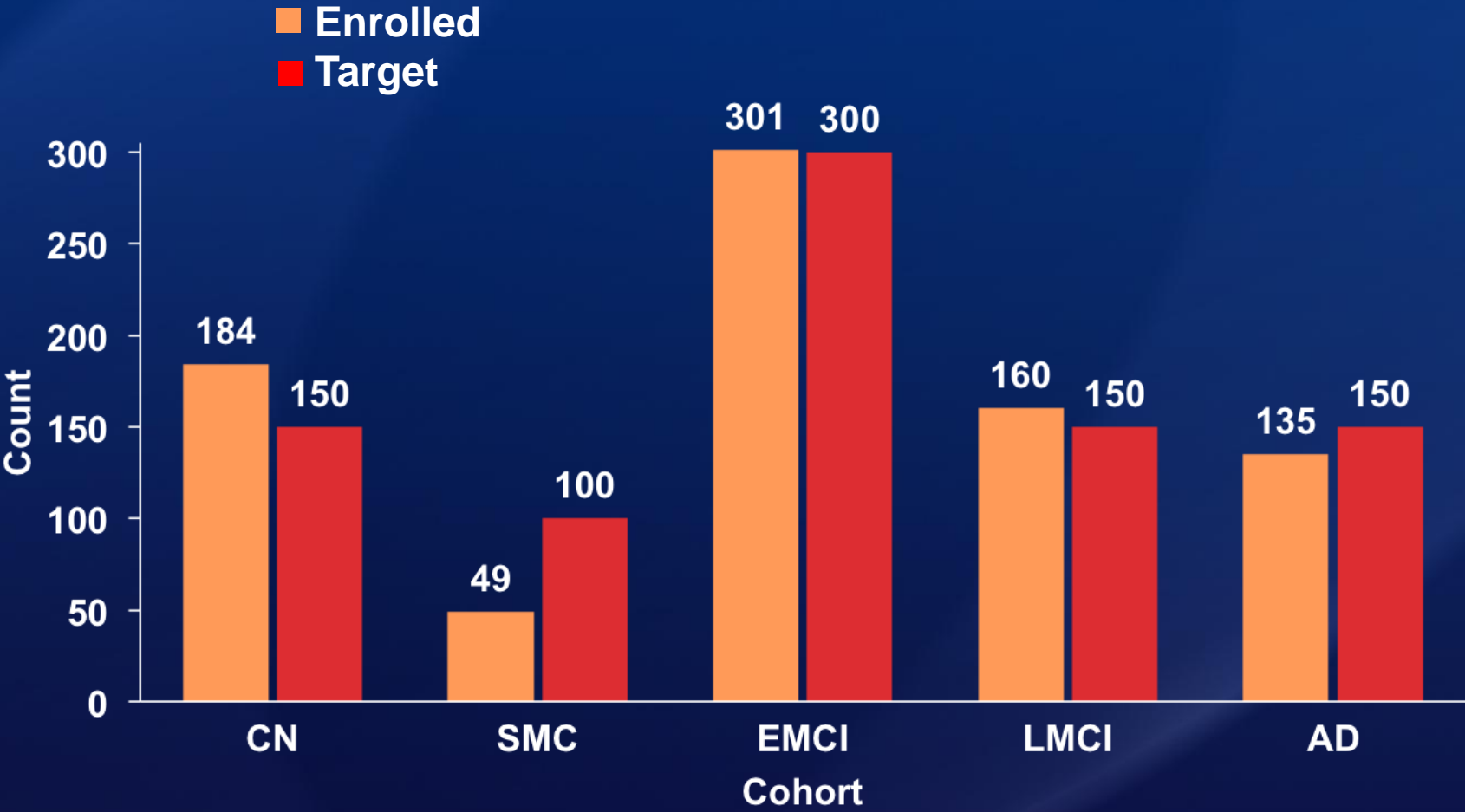
- 59 sites in U.S. and Canada
- Subjects screened: 1244
- Overall screen fail: 434 (35%)
  - Controls = 34% screen fail rate
  - SMC = 35% screen fail rate
  - EMCI = 46% screen fail rate
  - LMCI = 28% screen fail rate
  - AD = 33% screen fail rate

# ADNI 2 Enrollment Update

- **New subjects enrolled: 704** (not including baseline fails)
  - Controls = 184 (target 150)
  - SMC = 49 (target 100)
  - EMCI = 301 [ADNI 2 (176) + ADNI GO (125)] out of 300
  - LMCI = 160 (target 150)
  - AD = 135 (target 150)
- **ADNI 1 continuations to ADNI 2:**
  - 126 controls + 147 MCI = 273
- **ADNI GO continuations to ADNI 2:**
  - 120 EMCI
- **Total Enrolled in ADNI 2: 1097**

(combined across new subjects and continuation from ADNI1/GO)

# ADNI GO + 2 Cumulative Enrollment July 2013

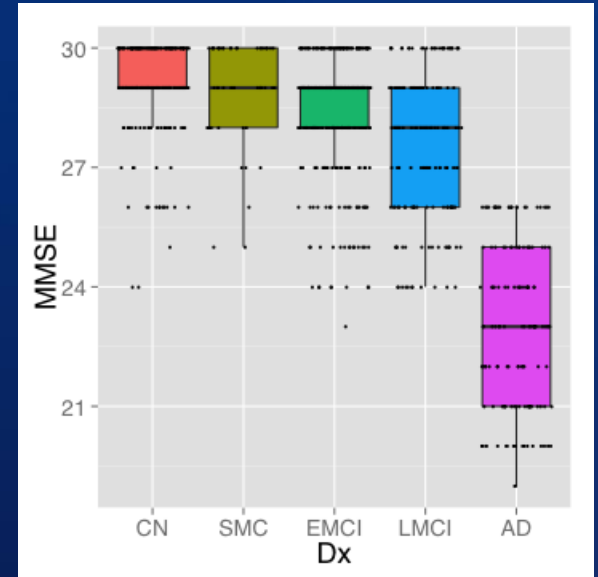
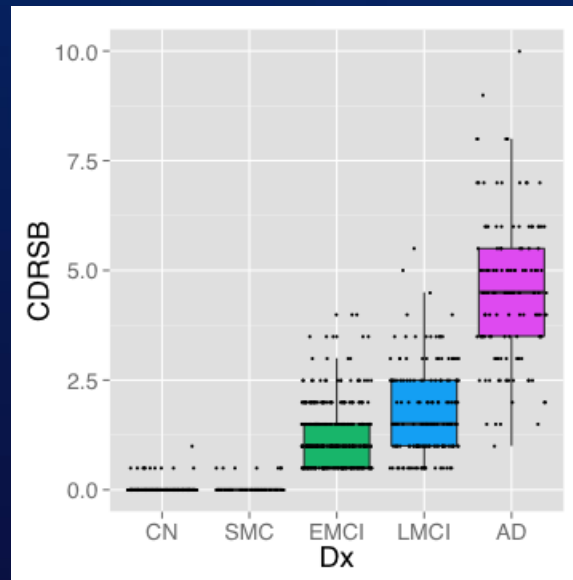
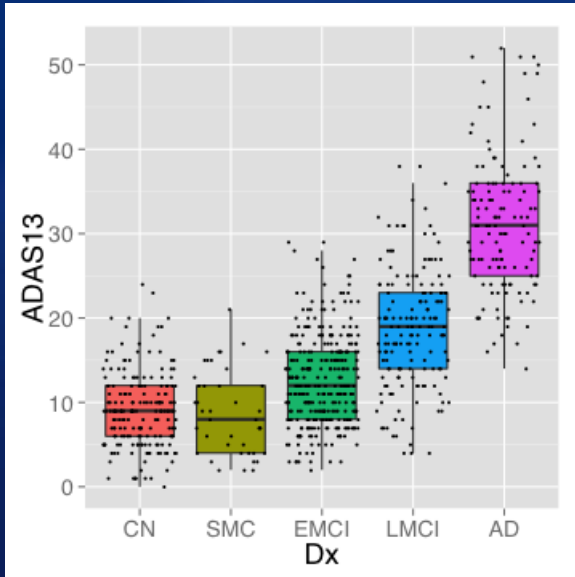


# ADNI GO + 2 Baseline

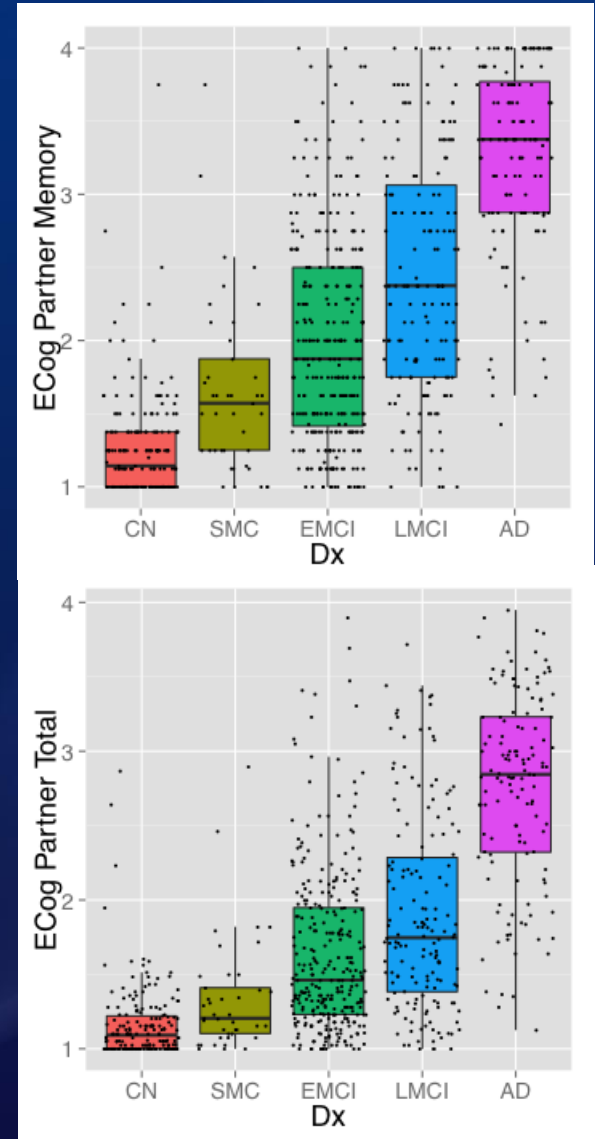
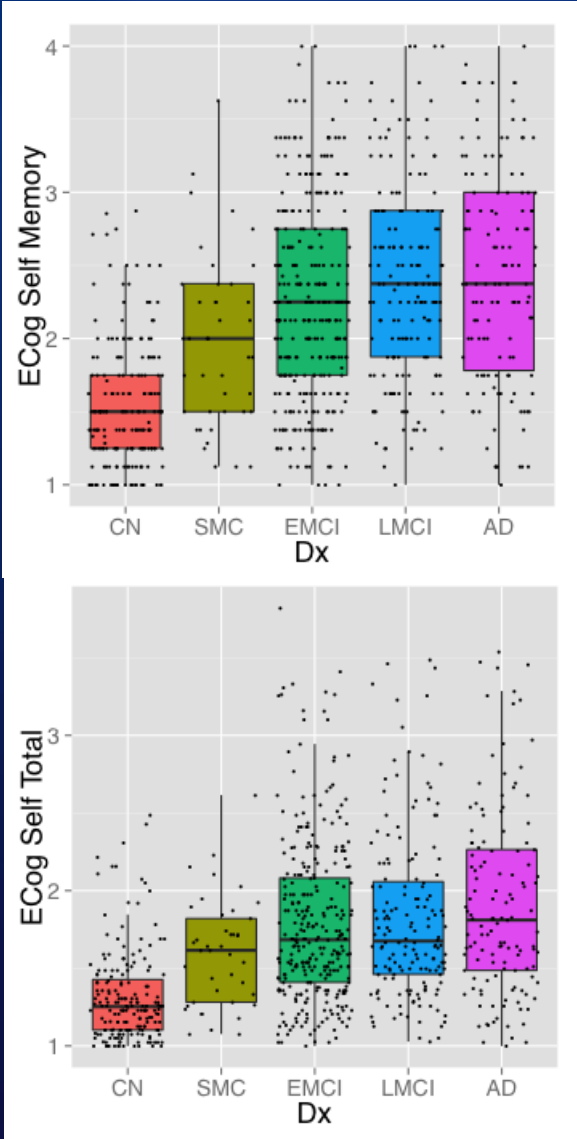
## July 2013

	<b>CN</b> n=184	<b>SMC</b> n=49	<b>EMCI</b> n=301	<b>LMCI</b> n=160	<b>AD</b> n=135	<b>Combined</b> n=830	<b>P</b>
<b>Age (yrs)</b>	73.4 ( 6.3)	70.9 ( 5.0)	71.3 ( 7.5)	71.9 ( 7.7)	75.1 ( 8.1)	72.4 ( 7.3)	<0.001
<b>Female</b>	94 (51%)	29 (59%)	131 (44%)	74 (46%)	44 (39%)	383 (46%)	0.11
<b>Education</b>	16.5 ( 2.5)	17.2 ( 2.3)	16.0 ( 2.7)	16.5 ( 2.6)	15.8 ( 2.7)	16.3 ( 2.6)	0.002
<b>CDR-SB</b>	0.033 (0.134)	0.070 (0.175)	1.291 (0.763)	1.772 (1.031)	4.681 (1.592)	1.565 (1.739)	<0.001
<b>ADAS 13</b>	9.2 ( 4.5)	8.8 ( 4.8)	12.7 ( 5.4)	18.8 ( 7.1)	31.1 ( 8.1)	15.8 ( 9.6)	<0.001
<b>MMSE</b>	29.0 ( 1.3)	29.0 ( 1.3)	28.3 ( 1.6)	27.6 ( 1.8)	22.9 ( 2.0)	27.5 ( 2.6)	<0.001

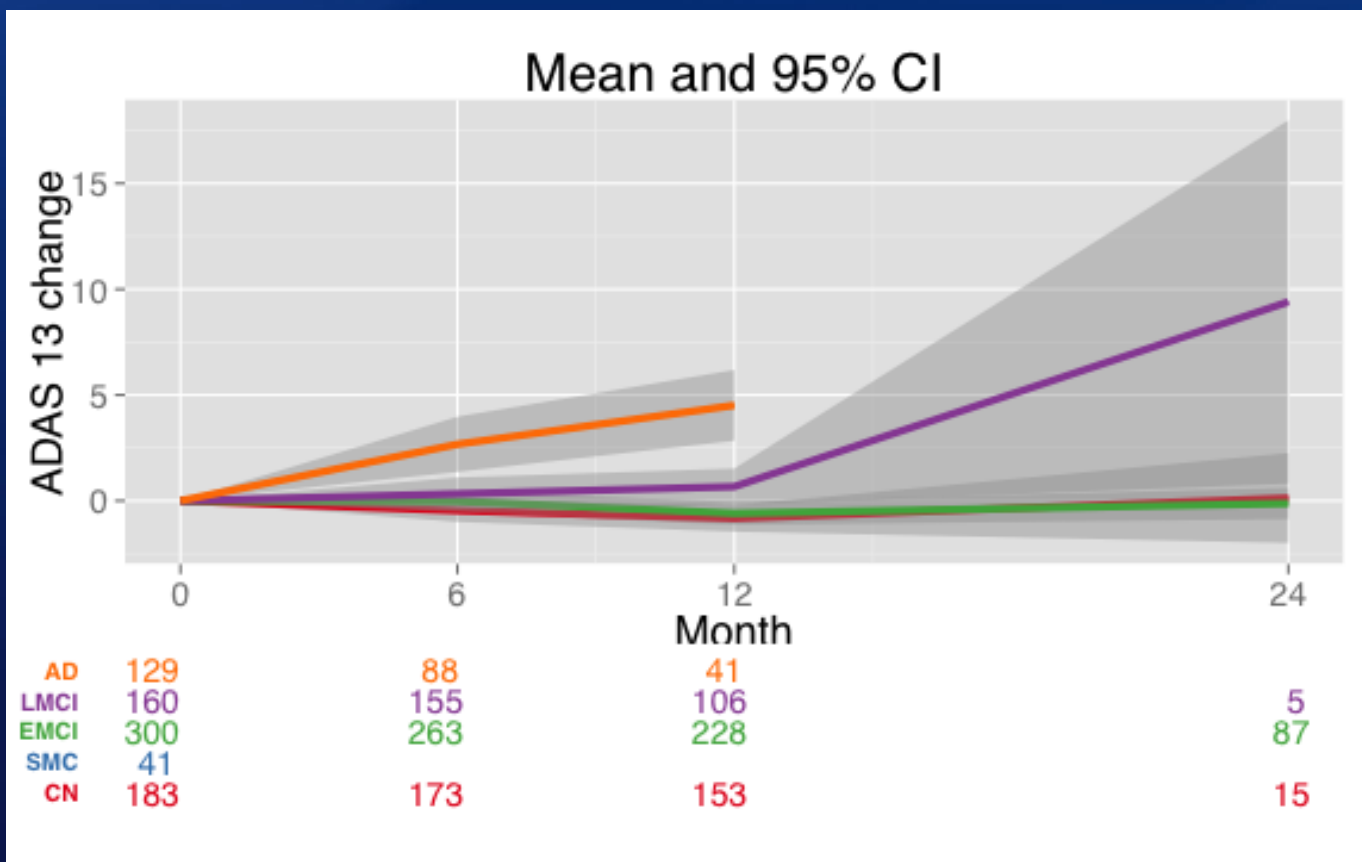
# Baseline Box Plots



# Baseline Box Plots

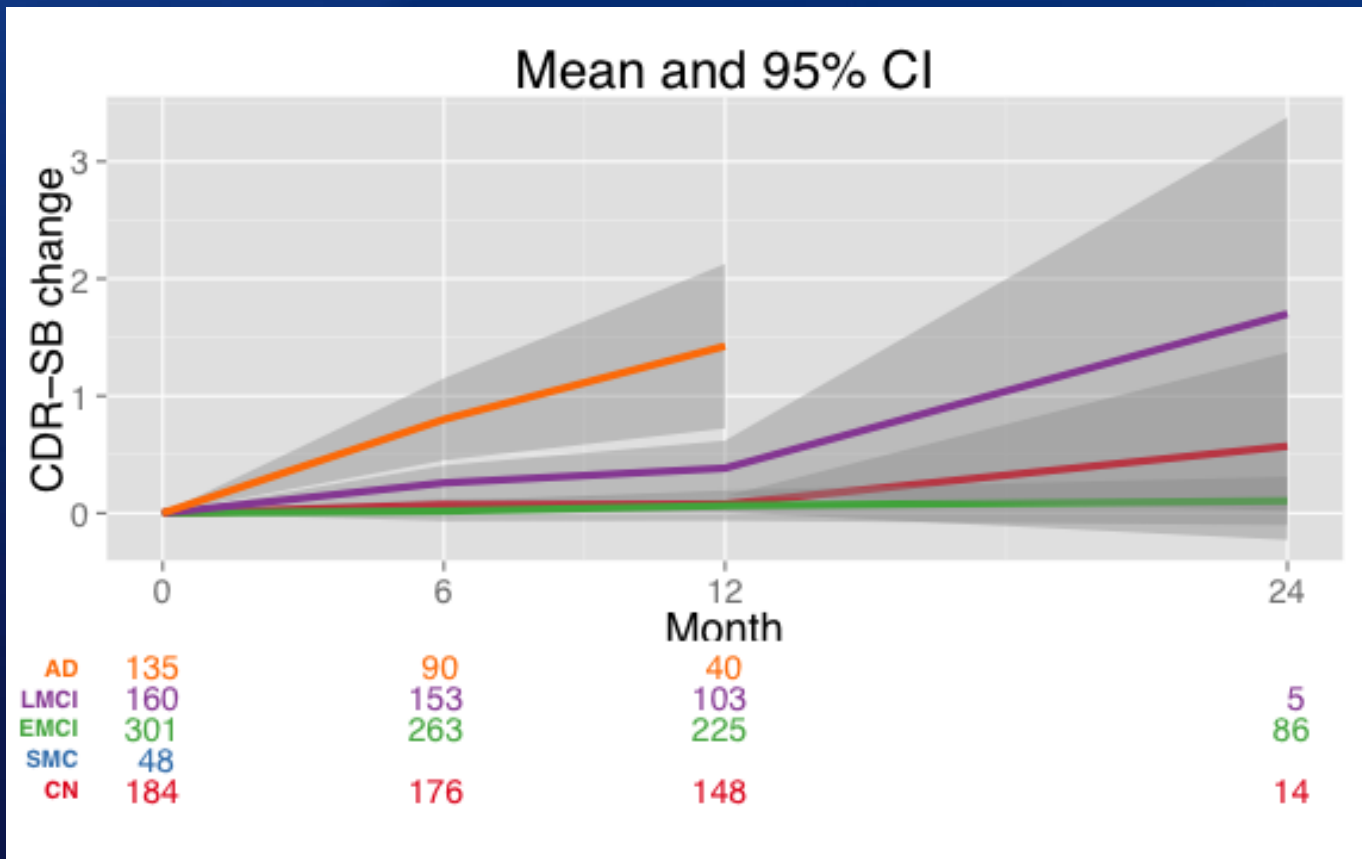


# ADAS 13 Change From Baseline





# CDR-SB Change From Baseline

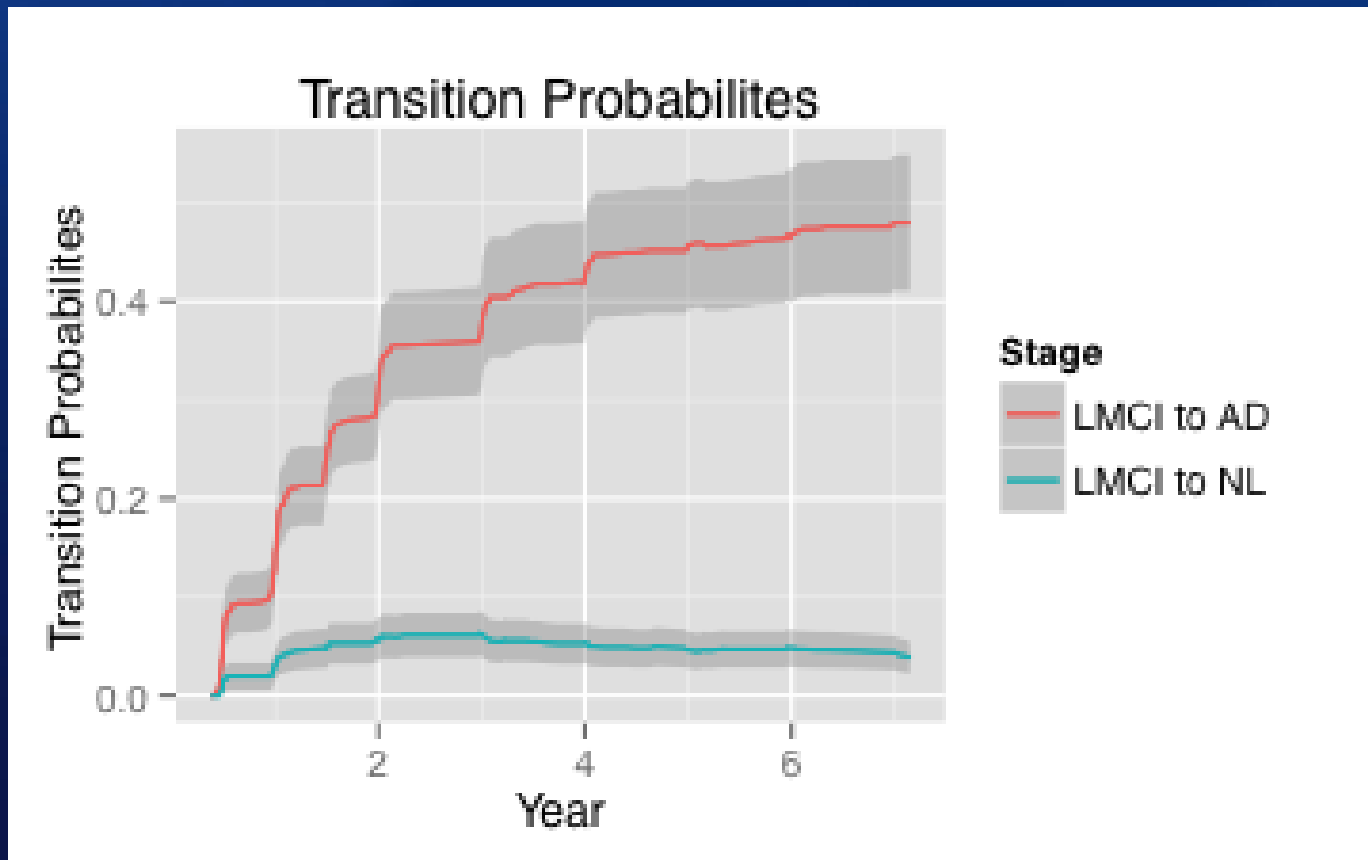


# Transition Matrix

	Final				
Initial	NL		LMCI	AD	Sum
NL	404 (86%)		42 (12%)	9 (2%)	455
EMCI	13 (4%)		243 (80%)	10 (16%)	304
LMCI	18 (4%)		313 (75%)	226 (20%)	557
AD	0 (0.1%)		4 (3%)	320 (97%)	324
Sum	435		602	565	1640

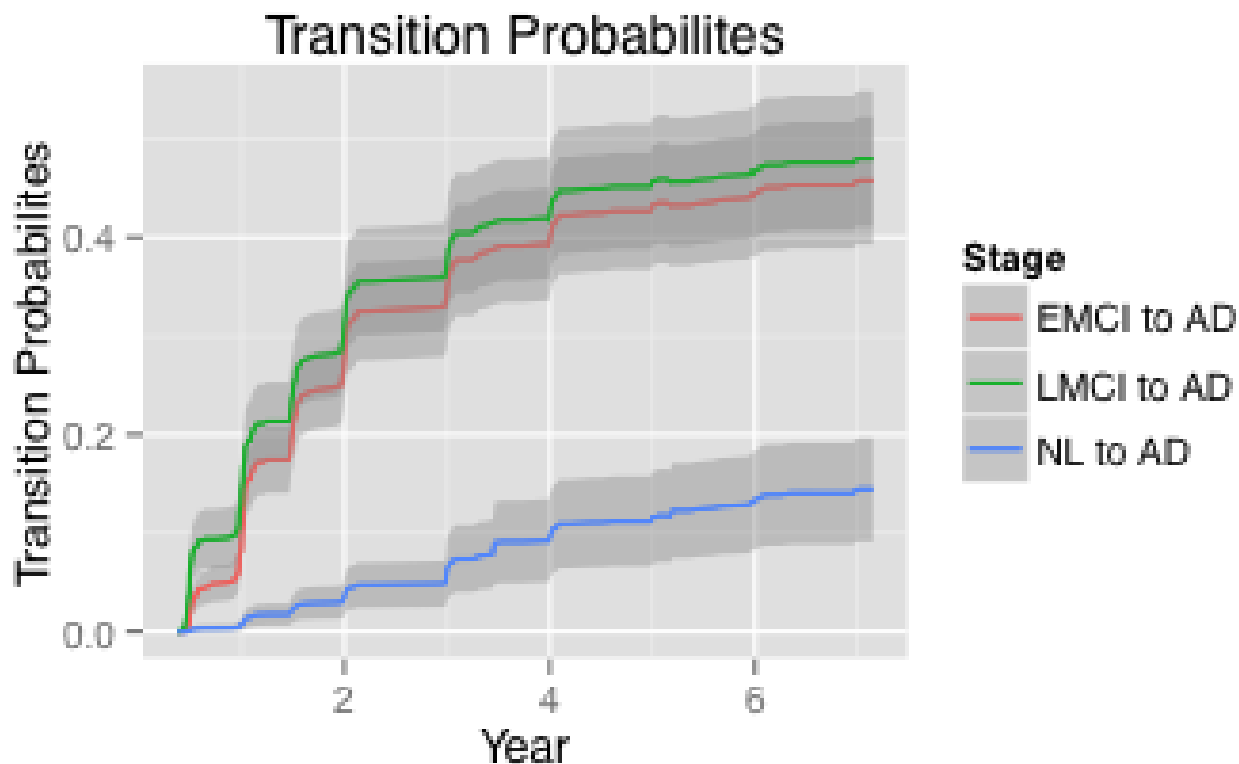
Last observed count (year 1 probability)  
 Subjects with at least one follow-up Dx  
 Transitions to EMCI not considered

# Transition from LMCI



226/557 LMCI → AD  
18/557 NL ← LMCI

# Transition to dementia

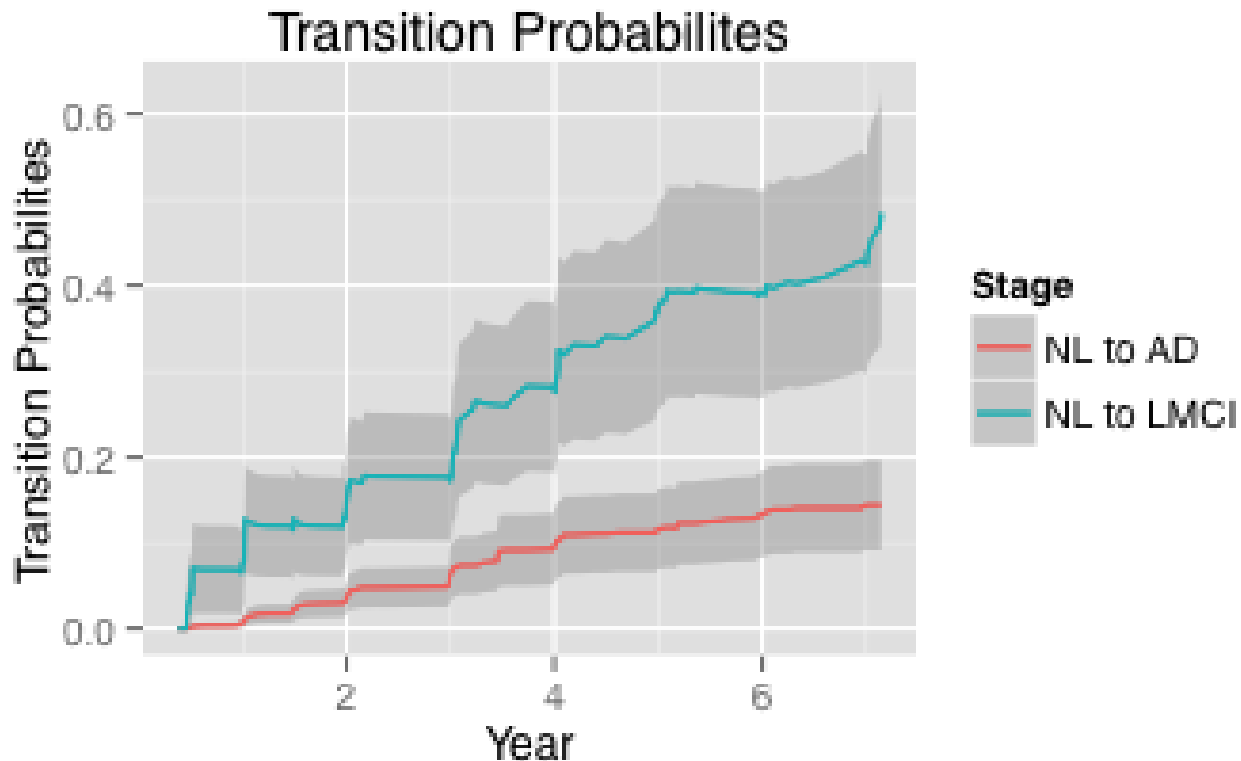


9/455 NL → AD

10/304 EMCI → AD

226/557 LMCI → AD

# Transition from normal



42/455 NL → LMCI

9/455 NL → AD