

Biostatistics Core Update

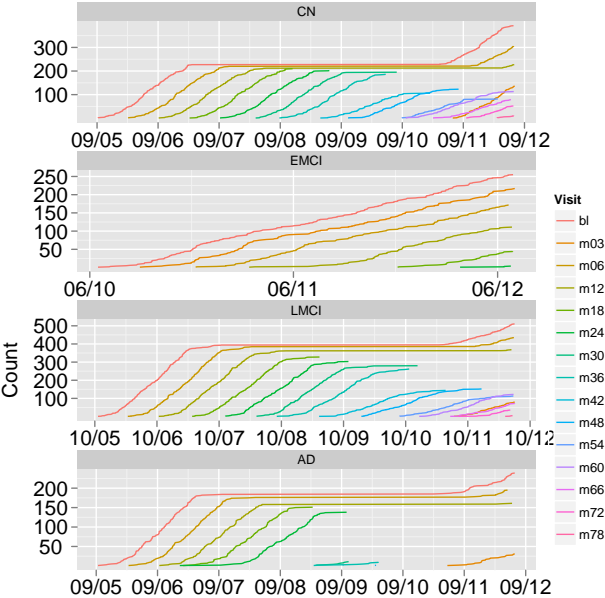
Laurel Beckett, Danielle Harvey, Daniel Tancredi,
Chun-Jung Huang, Huanli Wang
(UC Davis)

Michael Donohue, Anthony Gamst, Chung-Kai Sun
(UC San Diego)

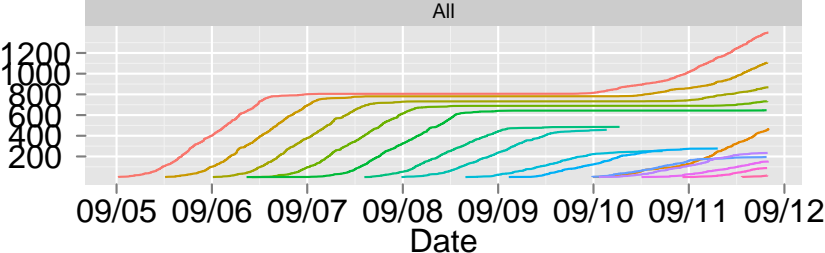
Vancouver, BC

July 13, 2012

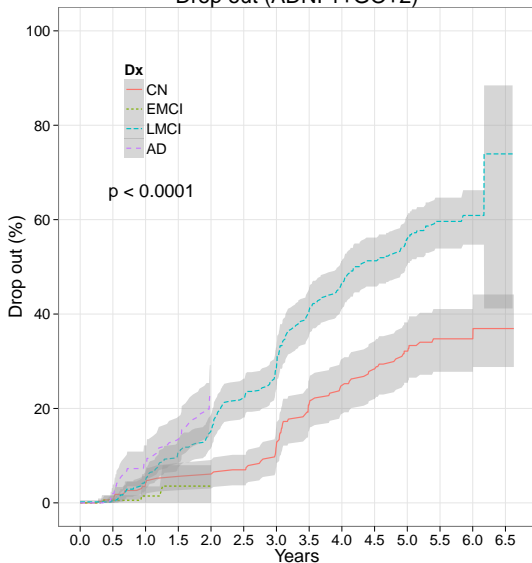
Cumulative visit counts 1+GO+2



Cumulative visit counts 1+GO+2



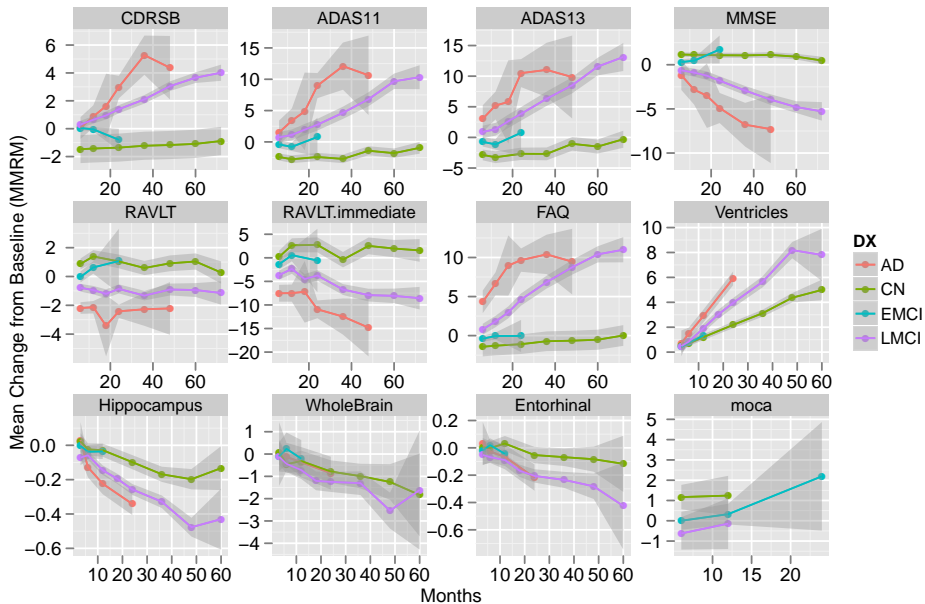
Drop out (ADNI 1+GO+2)



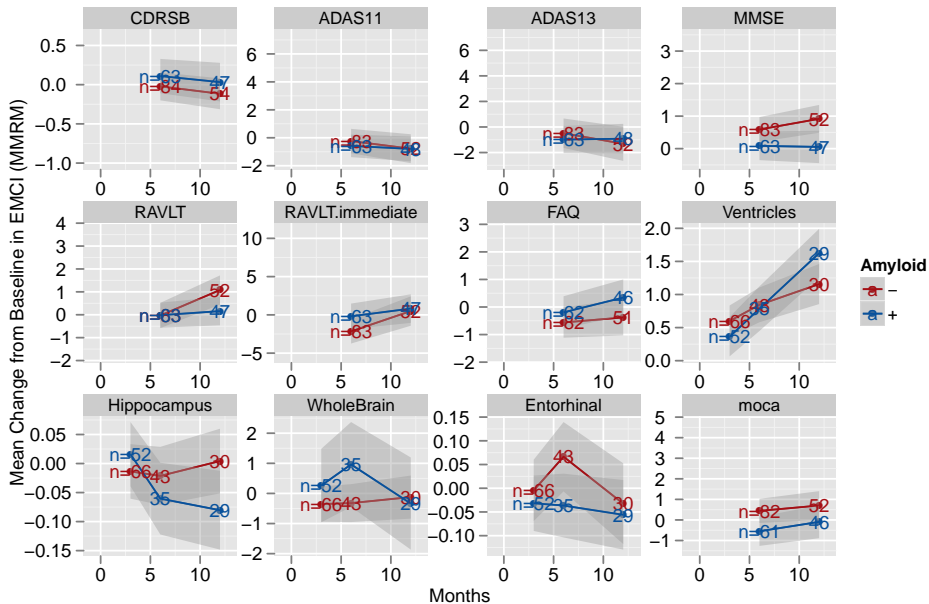
AD	239	194	170	158	0	0	0	0	0	0	0	0	0
LMCI	510	423	376	351	331	303	264	204	180	150	121	68	16
EMCI	255	156	86	27	3	0	0	0	0	0	0	0	0
CN	393	269	219	212	211	208	192	158	149	138	116	74	31

Number of subjects per time-point

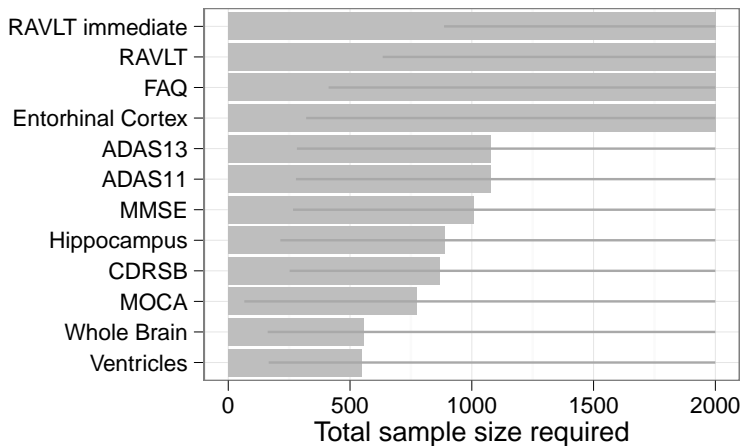
Change from baseline



EMCI with vs without amyloid

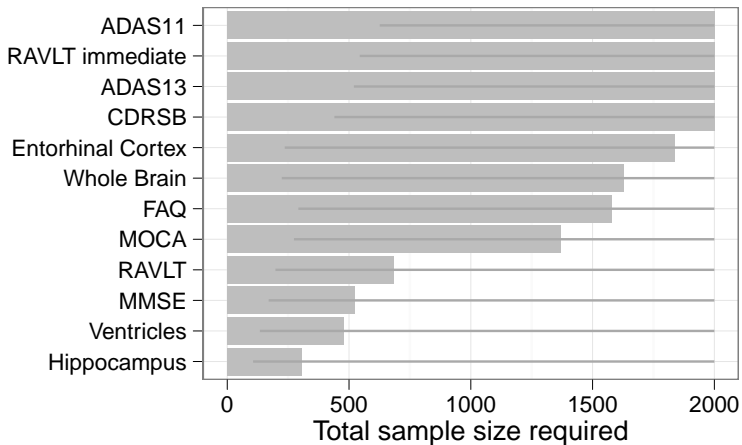


NC



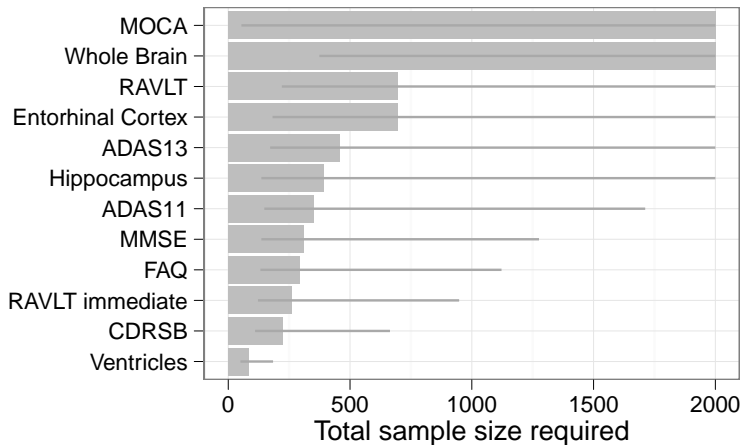
24 month study to detect 50% amyloid group difference;
20% dropout; 6 month visits; MMRM; 80% power ($\alpha = 5\%$)

EMCI



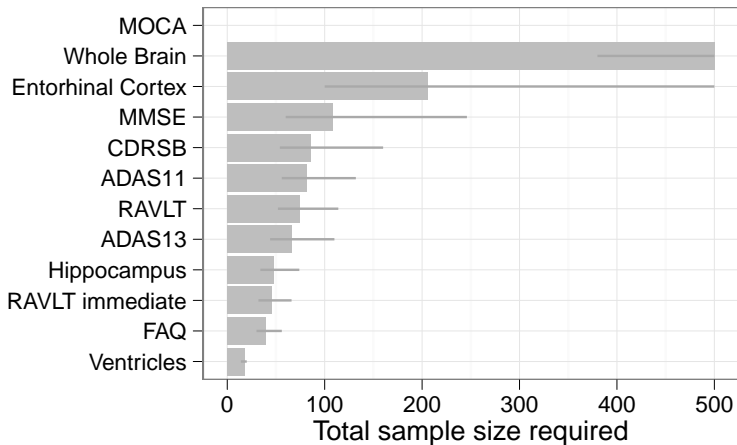
12 month study to detect 50% amyloid group difference;
20% dropout; 6 month visits; MMRM; 80% power ($\alpha = 5\%$)

LMCI



24 month study to detect 50% amyloid group difference;
20% dropout; 6 month visits; MMRM; 80% power ($\alpha = 5\%$)

AD



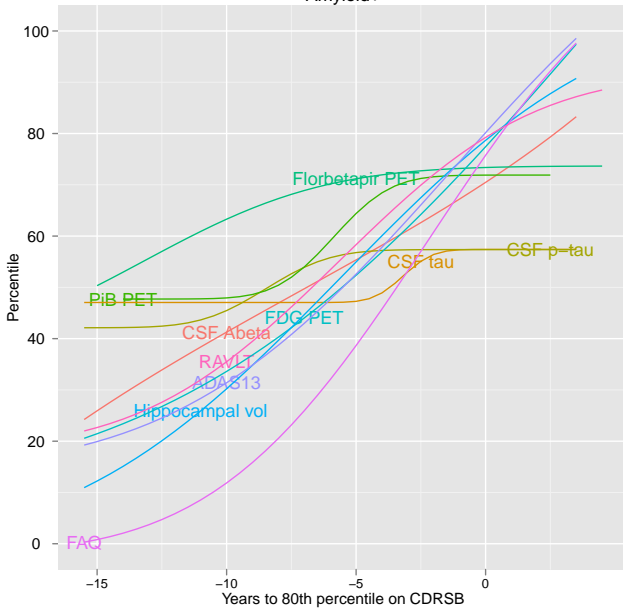
24 month study to detect 50% absolute change;
20% dropout; 6 month visits; MMRM; 80% power ($\alpha = 5\%$)

Biomarker Modeling Session 04-01

- **Wednesday 11:30 - 1:00**
- **Ballroom A**

Amyloid+ (iterative algorithm animation)

Amyloid+



Thank you from the Biostat Core!

- **Biomarker Modeling Session 04-01**
- **Wednesday 11:30 - 1:00**
- **Ballroom A**